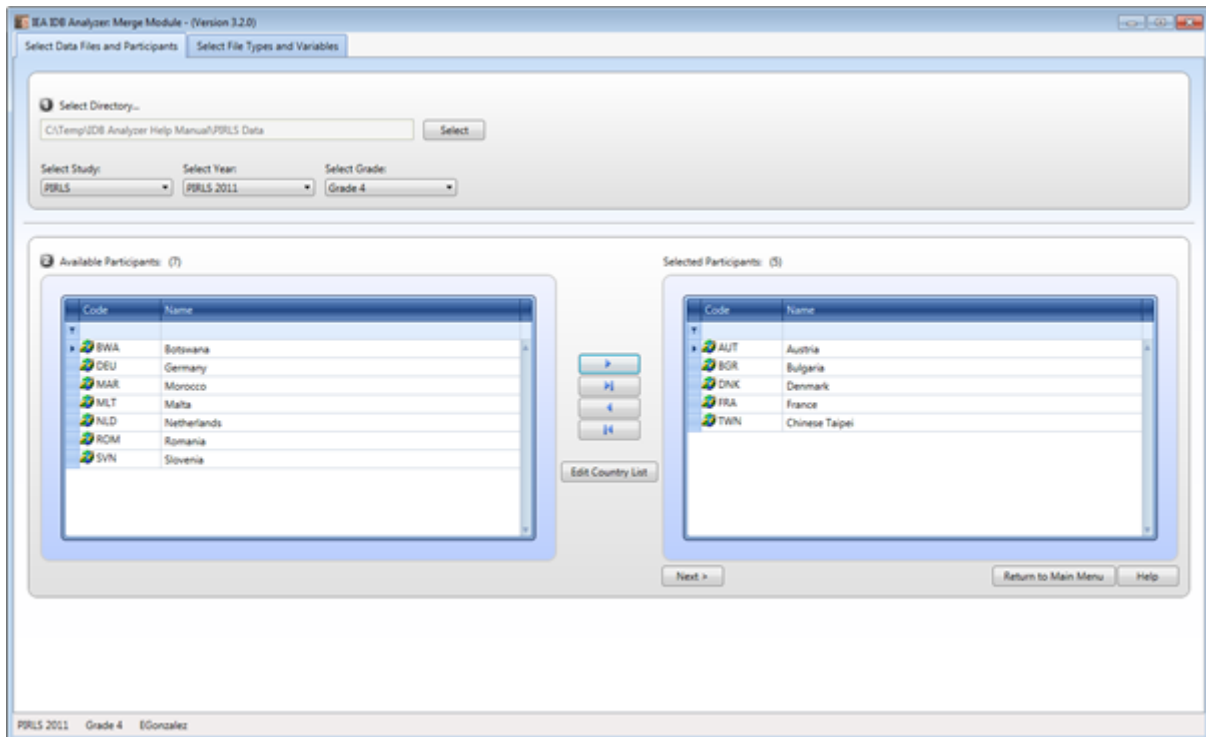


Figure 6: Merge Module Setup for Selecting Data Files Directory and Countries



- To edit the country labels, click on the Edit Country List button and you will be prompted with a list of country labels for editing. Figure 7 shows the **Edit Country List** window, which allows you to edit the names of the. Additionally, you can delete countries from the list by clicking on the **Delete Country** button or add countries by clicking on the **Add Country** button. When you add a new country to the list, you first need to add the three-letter country code, then the numerical ISO code, and the complete country name field. Clicking the **Save** button will save the changes and the **Ok** button will close the **Country List Editor**. Please note that if you duplicate an existing country code, the IDB Analyzer will display a warning message that there is a duplicate in the country list and will not implement the changes. Clicking the button **Restore Defaults** will revert the Country List to its default content.

Figure 7: Country List Editor

