

Figure 31: Analysis Module Setup for Computing Logistic Regression Coefficients

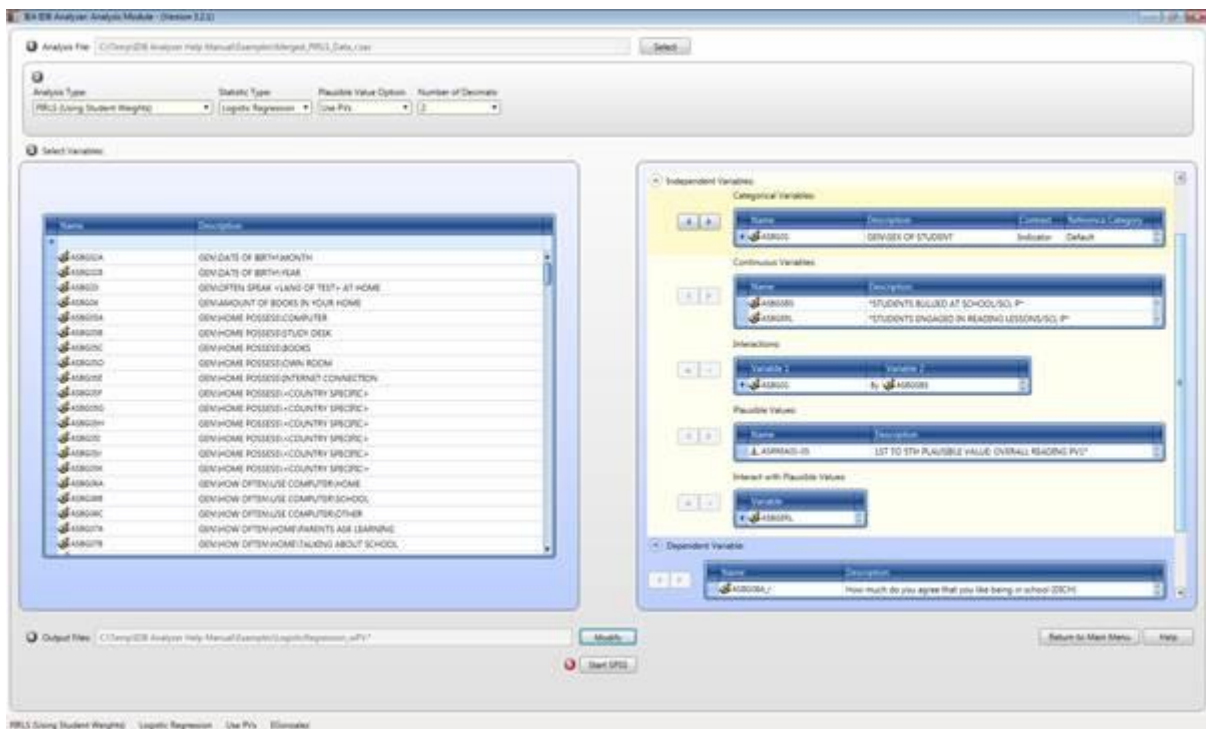
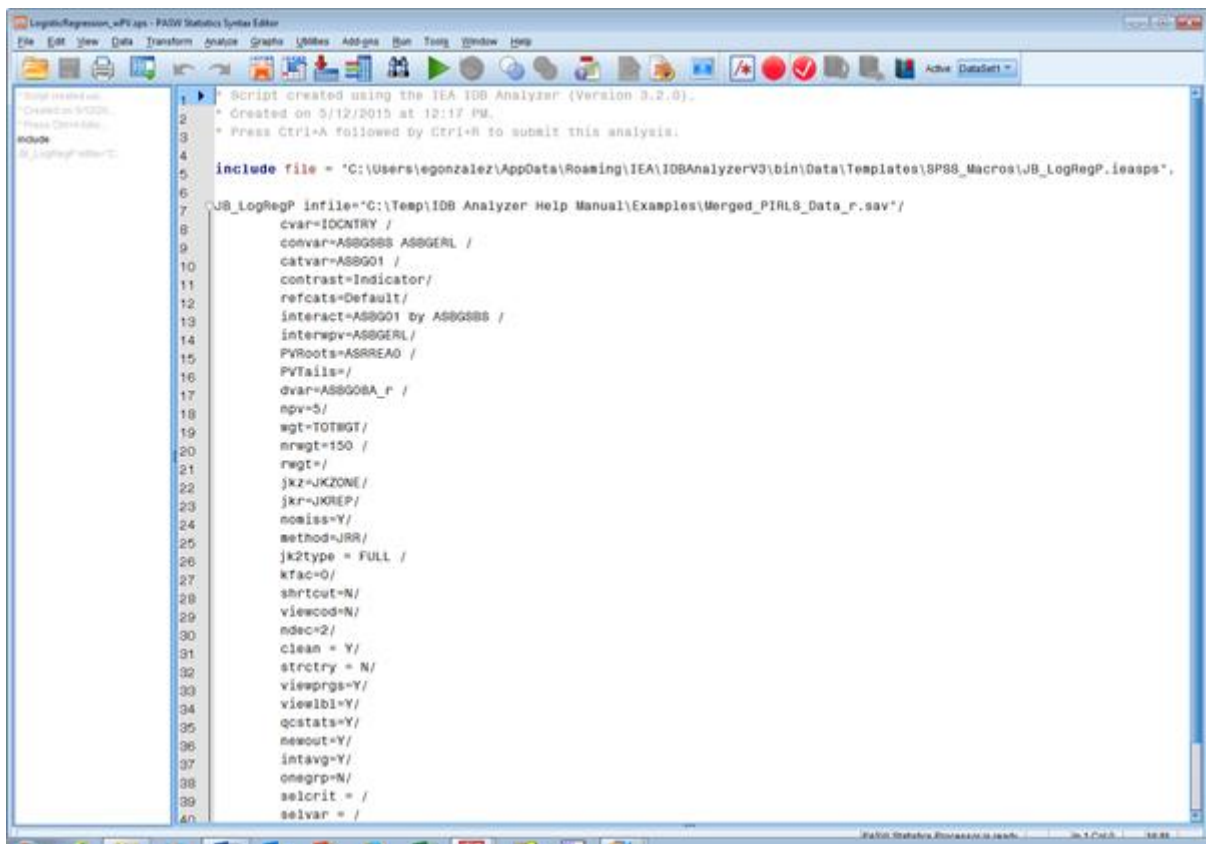


Figure 32: SPSS Syntax for Computing Logistic regression Coefficients



The columns in the “\_Model” Excel file and SPSS dataset are the following:

- Grouping Variables: Grouping variables used in defining the groups in the analysis (only IDCNTRY in this case)