

Figure 29: Analysis Module Setup for Computing Logistic Regression Coefficients

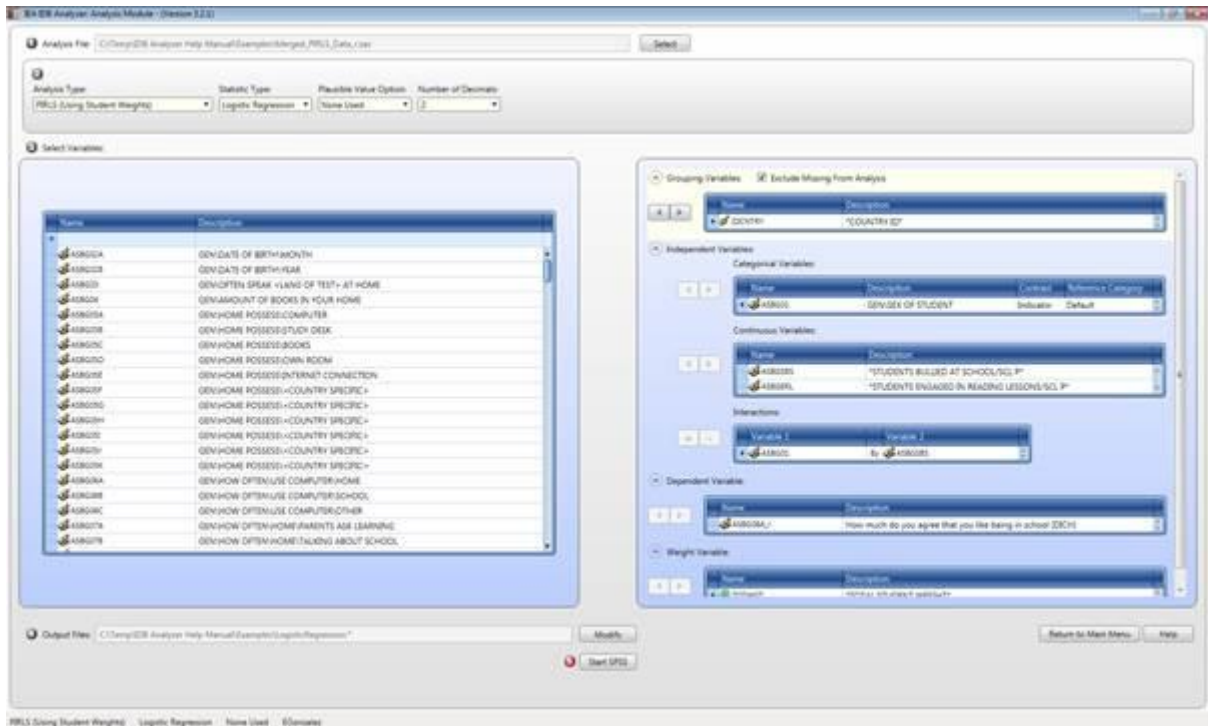
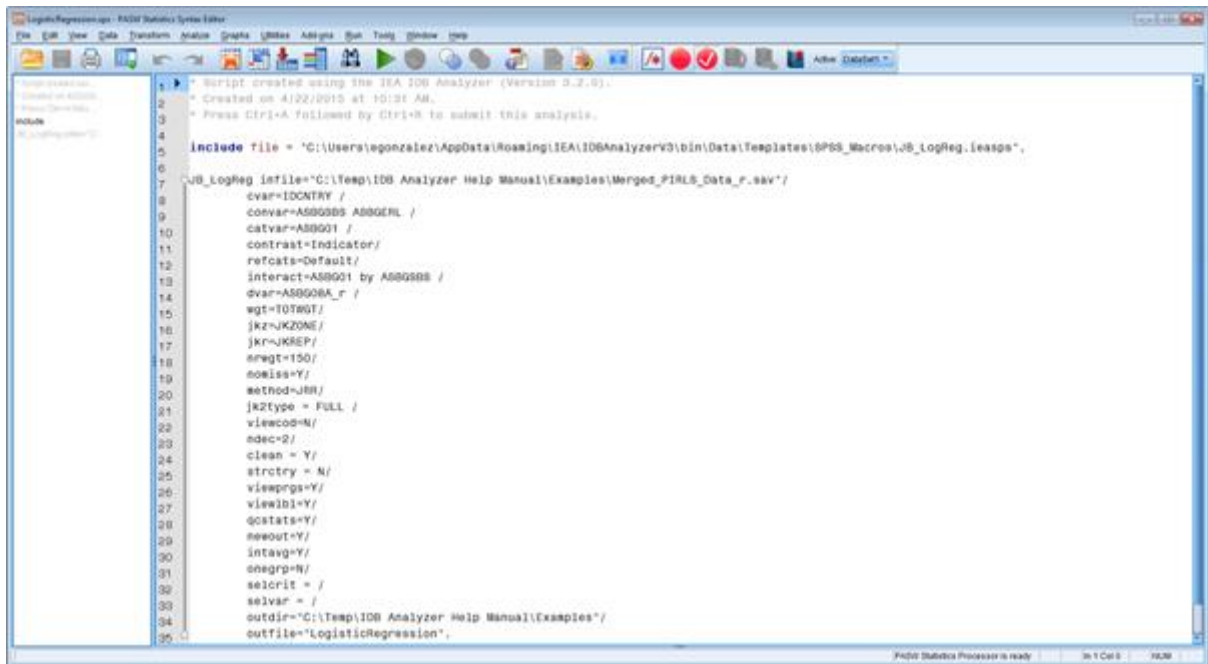


Figure 30: SPSS Syntax for Computing Logistic regression Coefficients



The columns in the “_Model” Excel file and SPSS dataset are the following:

- Grouping Variables: Grouping variables used in defining the groups in the analysis (only IDCOUNTRY in this case)
- LL: -2 Log Likelihood Coefficient
- CSR: Cox and Snell R Squared coefficient