

Figure 27: Analysis Module Setup for Computing Percentiles using Plausible Values

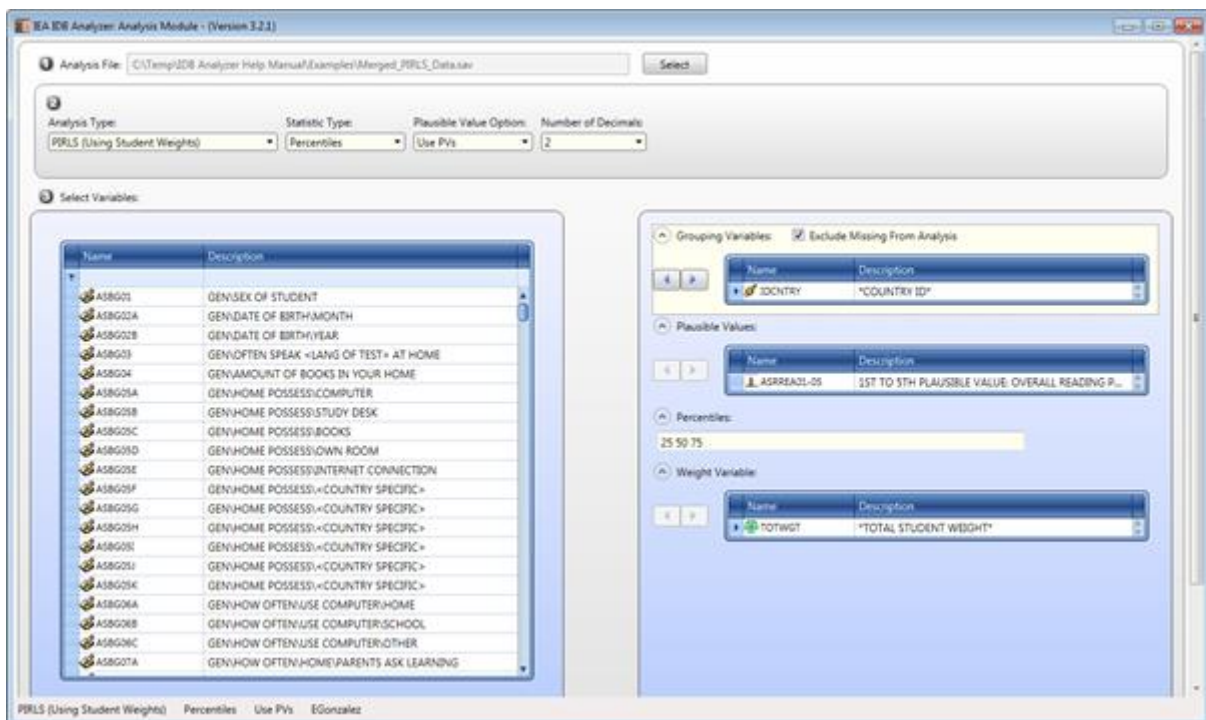
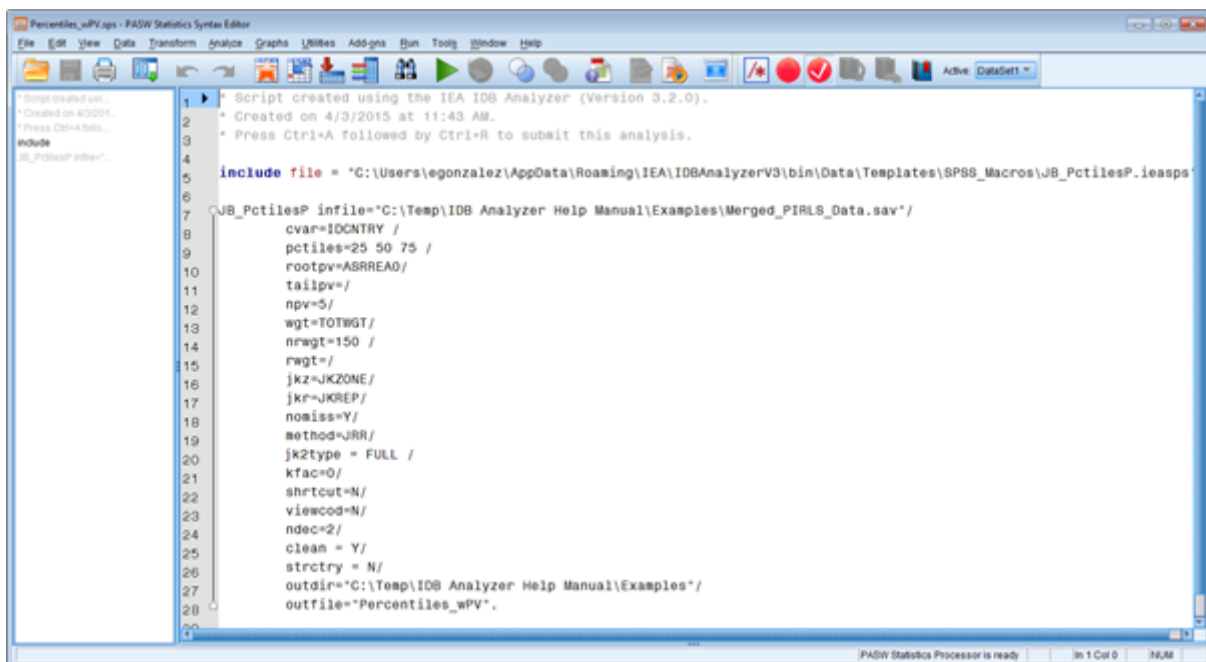


Figure 28: SPSS Syntax for Computing Percentiles using Plausible Values



The columns in the Excel file and SPSS datasets are the following:

- Grouping Variables: Grouping variables used in defining the groups for the analysis (only IDCNTRY in this case)
- DVAR: Analysis Variable used in the analysis
- N: Number of cases in group
- TOTWGT: Sum of the weights for cases in the group