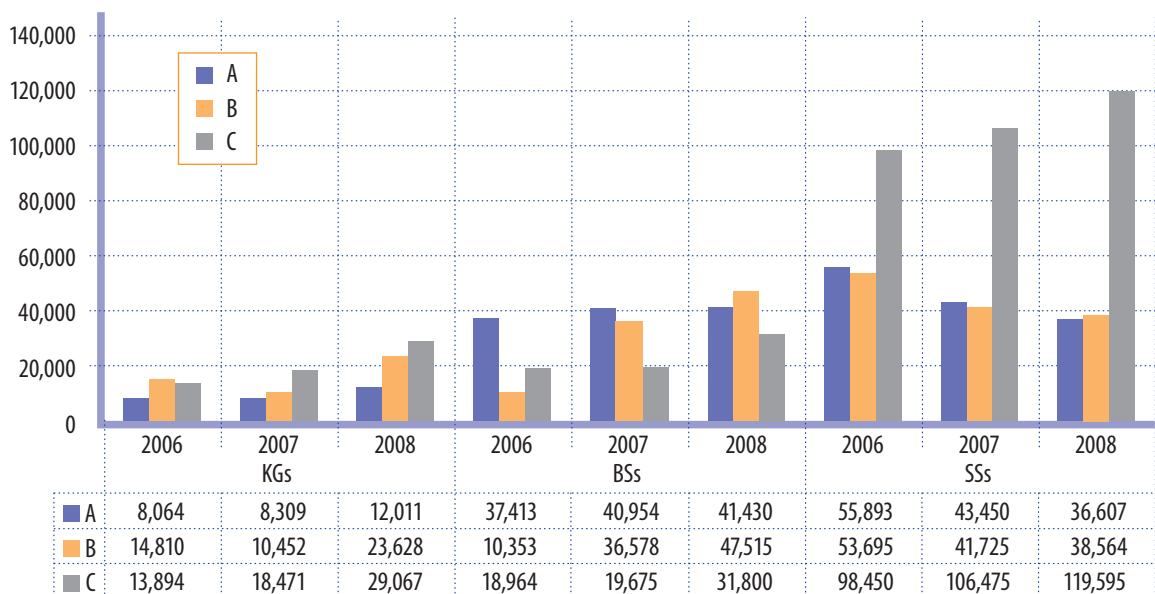


Diagram 4

Expenditure incurred on education towards health in the visited kindergartens, basic schools and secondary schools between 2006 and 2008 (data in CZK)



Key:

A – expenditure on purchasing aids, guidelines, further education of teachers and services for the education area relating to education towards health

B – expenditure on equipment necessary for motor activities, supports and relaxation

C – remuneration of teachers implementing education in the relevant area of education

The CSI also checked **how resources for education towards health are spent**. Average costs per school and trends within the evaluated three-year period (2006–2008) in the three monitored indicators are illustrated by the Diagram 4.

### B.1.2

#### Safe Environment for Education

Inspection activities aimed at the area of safety and the protection of health were implemented in 227 schools during the past year. Evaluations of education activities of schools concerning the organisation, management, staffing and material background of school operations were subject of inspections.

The organisational and administrative duties of school management relating to a safe environment for education are met very well in the majority of cases. Some problems were detected in the training of teachers in compliance with Decree No. 106/2001 Coll. on hygienic requirements for recreational events for children, as amended. This obligation was met by only 76 % of entities. Findings concerning particular material support for safety during the teaching process were not so positive. For example, during practical activities only 40 % of pupils had personal protective labour aids.

More detailed evaluation of the situation in terms of safety and the appropriateness of rooms and their equipment is summarised in the Table 9.

Areas requiring improvement can be assumed on the basis of data included in the table which, *inter alia*, show differences between schools of individual levels. For example, only 68 % of kindergarten teachers were trained in accordance with Decree No. 106/2001 Coll. and 25 % of school gardens were worse than required. As regards basic schools it was mainly floors that were appraised negatively – only 73 % of schools were compatible with safety requirements. Furniture appropriate for the age groups of pupils was not found in 21 % of schools. 14 % of secondary school teachers were not trained in providing first aid and 31 % of teachers had not participated in training courses on the provisions of